

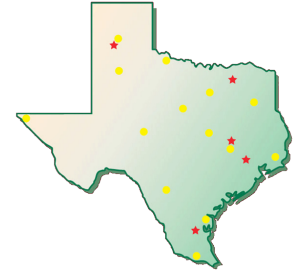
## Texas A&M AgriLife

### Texas A&M University System

The Texas A&M University System is composed of nine universities, a health science center, and seven agricultural or engineering research/extension agencies. The three keystone agricultural entities are the College of Agriculture and Life Sciences (teaching), Texas AgriLife Research (research), and Texas AgriLife Extension (extension).

### College of Agriculture and Life Sciences

- **14** academic departments: **336** faculty members
- **6,689** College enrollment: **5,613** undergrad & **1,076** graduate students
- A “**Top 3**” U.S. Ag College
- **#2 in the nation** Biological & Agricultural Engineering Department
- Faculty
  - **2** Nobel Laureates and **3** Wolf Prize Recipients
  - **4** in National Academy of Sciences
  - **1** in National Academy of Engineering



### Texas AgriLife Research

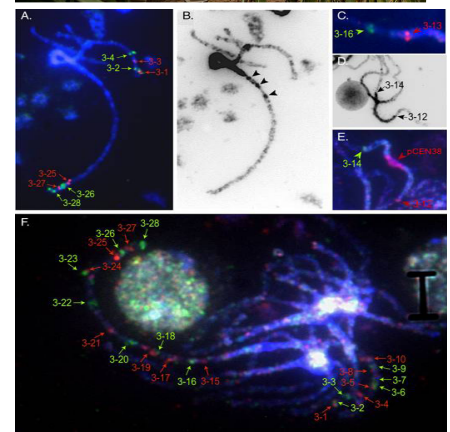
- **13** Research and Extension Centers and **7** Institutes
- **859** Contract and Grant Awards, with **\$68** million in Contracts and Grants
- **\$171** million in Total Expenditures
- **380** faculty members located statewide

### Texas AgriLife Extension

- **950** professional educators across Texas
- **814.1** million direct teaching exposures in Texas (2007)

### Academic Disciplines

- **Agricultural Economics**
- **Agricultural Leadership, Education, and Communication**
- **Animal Science** (largest in U.S.)
- **Biochemistry/Biophysics**
- **Biological and Agricultural Engineering**
- **Ecosystem Science and Management**
- **Entomology** (educates more than a third of U.S. entomologists)
- **Horticultural Sciences**
- **Nutrition and Food Sciences**
- **Plant Pathology and Microbiology**
- **Poultry Science** (largest in the world)
- **Recreation, Park, and Tourism**
- **Soil and Crop Sciences**
- **Wildlife and Fisheries Sciences**



For more information, contact

Bob Avant, Corporate Relations Director,  
Texas AgriLife Research  
100 Centeq Bldg. A | 1500 Research Parkway  
College Station TX 77843-2583  
Ph: 512.422.6171 | E-mail: bavant@tamu.edu